



THE Flush Entrance Door

With a wide choice of flush and glazed in door slabs, this Entrance Door is defined by contemporary sightlines and sophisticated styling.

With a unique polyamide design which delivers exceptional through-life performance with a maximum bowing tolerance of only 2.5mm under heat stress.

This means it won't bow or stick, regardless of the temperature outside, removing limitations on door design, including the specification of dark colours on south facing elevations.

Our entrance doors bring many benefits including aesthetics, security, functionality, and performance. Engineered to the highest industry standards, Rhino Aluminium offer a wide array of design options; from the sleek and subtle, to superior and grand contemporary designs.



Dr. Hahn
HINGES. MADE IN GERMANY.

The DOOR Designs

DESIGN OPTIONS



Official Police Security Initiative

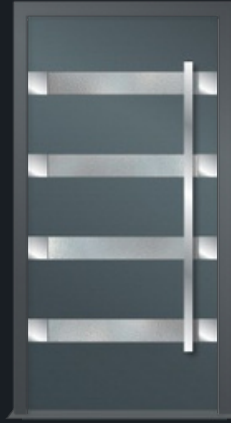
PANEL RANGE



ANGOLA



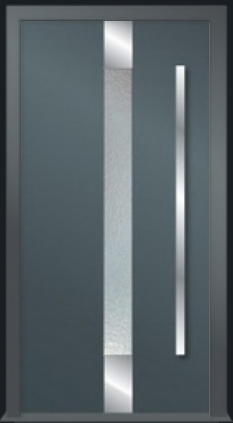
MALAWI



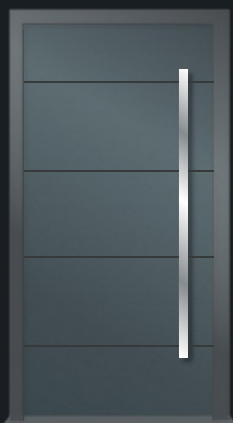
BALI 4 TAILED



JAVA



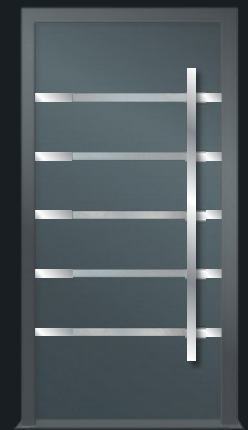
MOWSAMBIQUE TAILED



TANZANIA



KULON GROOVED



SAVANNAH 5 TAILED



BORNEO



KULON



SUMATRA



NAKURU

PREMIUM OXIDE RANGE



Bruno



Verderame



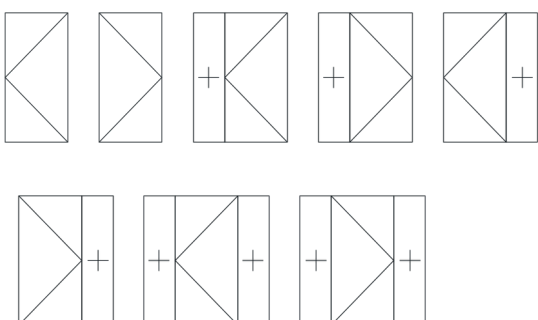
Nero

DESIGN FEATURES

- Ultra-secure non beaded, structurally bonded panel
- Laminate safety glass - 48mm triple glazed
- Winkhaus AV4 autolocking with key operation
- Stirling stainless bar handle
- 57mm panel depth
- Invisible drainage
- DR Hahn Rollenband AT 2-part security hinge system and hinge horns
- Ultion 1 Star Euro Cylinder with internal thumbturn
- ekey Entry System available
- Textured PPC finish as standard
- Stainless steel hardware
- No central gasket

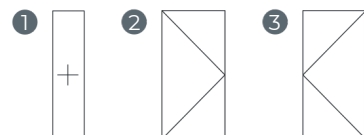
CONFIGURATIONS

The diagrams shown here illustrate some of the configurations achievable with the Rhino door.



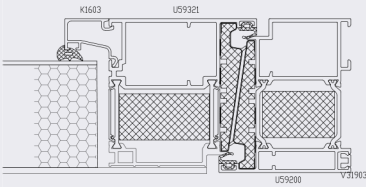
KEY

- ① Fixed Panel
- ② Hinged Right
- ③ Hinged Left

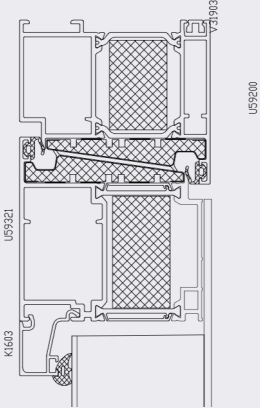


CROSS SECTIONS

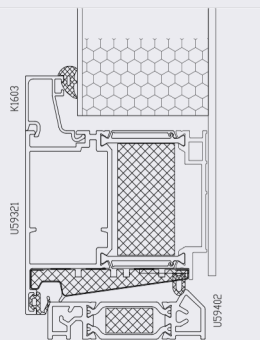
JAMB DETAIL



HEAD DETAIL



THRESHOLD DETAIL



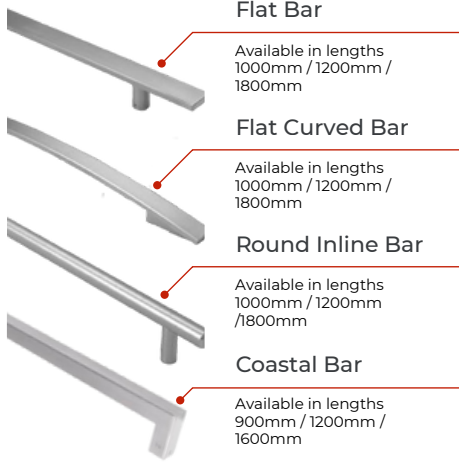
3D RENDER



HARDWARE OPTIONS

Supplement your aluminium door with our range of premium hardware. We have stainless steel handles designed for ease of use that won't rust or corrode. We can also provide a selection of long-lasting hinges that ensure a consistent, reliable performance.

EXTERNAL HANDLE OPTIONS



INTERNAL HANDLE

We have an exclusive collection of stylish hardware for our Rhino Doors. Our stainless steel locks, handles and accessories are just as durable as they are attractive and make the perfect finishing touch.



HAHN ROLLENBAND AT

Rhino Doors are fitted with Hahn Rollenband AT, a highly adaptable hinge system that ensures a consistent performance. Features include:

- Hinges adjustable in six directions
- One-piece, stainless steel bearing pinfor
- high levels of stability
- 20mm roller diameter for an unobtrusive design



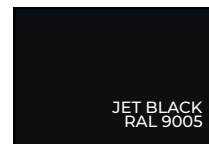
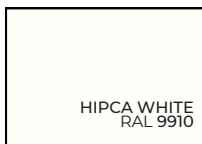
KEYLESS ENTRY ACCESS SOLUTIONS



Say goodbye to rummaging around in a bag, trying to find your keys. We've partnered with ekey and can include their fantastic keyless entry system in your next front-door project. Features include:

- Fingerprint scanner for easy access
- Additional access via PIN or card
- Surface or flush-mounted scanner
- Convenient remote opening
- Automatic push notifications
- Practical virtual assistance
- Uninterruptible power supply - get access even during a power outage
- Highly secure, stores fingerprints as unique binary numbers
- Save up to 99 different fingerprints
- Unaffected by rain or other poor weather conditions

STANDARD COLOURS - TEXTURED FINISH



Alternative Colour Options

Aside from our standard colours, we can also offer a more personalised finish. Select any colour from the RAL chart and even opt for a dual-colour finish. All colour options are in a textured finish as standard.

Performance & Accreditations

U-Value (Triple Glazing)	1.0 W/m ² k - Part L & Future Homes Ready
Air Permeability	NBN EN12207 (Class 4)
Water Tightness	NBN EN12208 (Class C4)
Wind Resistance	NBN EN12210 (Class C4)
Security	PAS24 SBD

Size Limits

Max Sash Weight	150 Kg
Max Sash Dimension	1200mm (w) 2400mm (h)

System Features

Dual Colour Option	✓
Multi-point Locking	✓
Glazing Options	48mm Triple Glazed

